



EN4165 Aluminum Backshells



Catering to the increasing demand for weight reduction in harsh-environment applications, ITT Cannon expands its robust portfolio of lightweight aluminum backshells for single gang EN4165 and ARINC 809 connectors.

Features & Benefits

- For use on any Single Gang EN4165 plug or receptacle
- Design per ARINC 809 Specifications
- Straight, 45°, and 90° cable exit
- Optimal EMI shielding performance with minimal air gaps
- Innovative, lightweight A380 aluminum construction
- 360° compression shielding
- Front mounting with #4-40 fillister head screws
- RoHS and REACH Compliant Electroless Nickel Finish

Aluminum EN4165 Backshell Ordering Guide

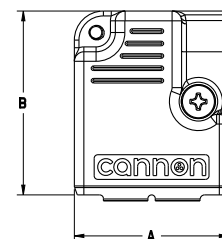
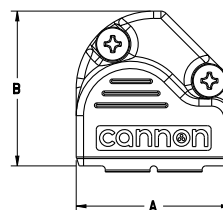
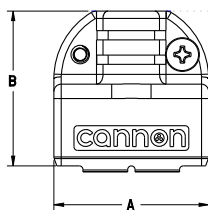
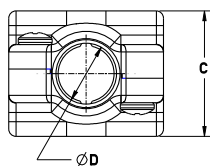
	1- Series	2- Orientation	3-Finish	4- Hardware
PN Example	RPRBS	S	F	

1 - Series	
RPRBS	EN4165 / ARINC 801 Backshells

2 -Shell Size	
S	Straight Exit
A	45 Degree Exit
B	90 Degree Exit

3 - Finish	
F	Electroless Nickel (standard)
W	Olive Drab Cadmium over Nickel
Z	Black Zinc Nickel

4 - Hardware Option	
NS	No Screw
Blank	Supplier with Screws



Descriptive Part Number	Numerical Part Number	Angle	A ± .06	B ± .010	C ± .06	ØD ± .02	Weight (g) Less Hardware	Screw Part Numbers*	Closure Screw QTY
RPRBSSFNS	070373-0001	STR	1.00	1.00	0.81	0.39	11.5	980-6000-233	2
RPRBSAFNS	070373-0002	45°	1.00	1.06	0.81	0.39	11.0		
RPRBSBFNS	070373-0003	90°	1.00	1.19	0.81	0.39	13.5		

* Screw part number is for a single screw if ordered separately.
For proper closure of backshells, you must order two 980-6000-233 screws.

Connect with your ITT Cannon representative today or visit us at ittcannon.com

Follow us



NORTH AMERICA

USA - Irvine, CA
+1.800.854.3028
MEXICO - Nogales
+52.631.3110050

EUROPE

GERMANY - Weinstadt
+49.7151.699.0
UK - Basingstoke
+44.1256.347400

ASIA PACIFIC

SINGAPORE
+65 66974205
JAPAN - Kanagawa
+81.462.57.2010

KOREA
+82.2.702.7111
CHINA - Shenzhen City
+86.755.2726.7888

HONG KONG
+852.2732.2720